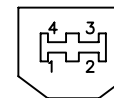
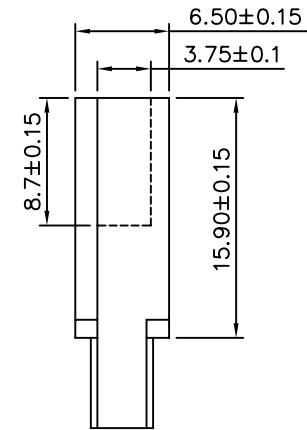
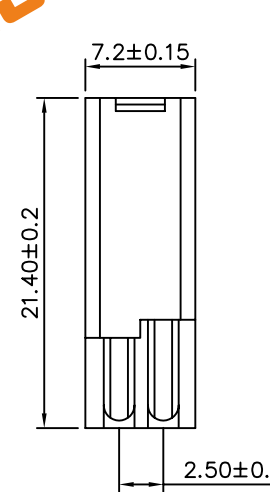
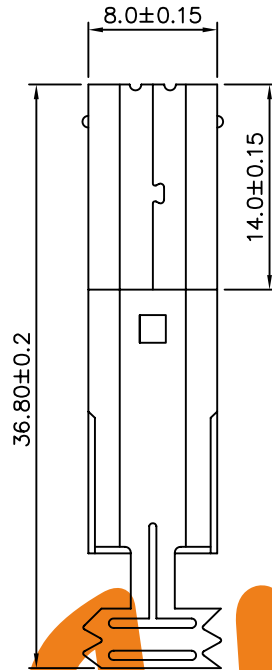


**SPECIFICATIONS**

Current Rating: 1A Max.  
 Dielectric Withstanding Voltage: 500V(AC) For 1 Minute  
 Contact Resistance: 30 Milliohms Max.  
 Insulation Resistance: 1000 Megohms Min. At DC 500V  
 Total Mating Force: 4.0Kgf Max.  
 Total Unmating Force: 1.0Kgf Min.  
 Temperature Range: -55°C~+105°C  
 Insulator: PBT, UL 94V-0  
 Contact: Copper Alloy, t=0.20mm, Gold Flash  
 Shell: Cold Rolled Steel, t=0.30mm, Nickel Plated



WWW.ASA-Electronic.com  
 ASA Electronic

**Telegram:**  
 09396994470

**ASA Electronic**  
 WWW.ASA-Elec.com  
 AsA Electronic Co.  
 Tel : (+98) 21 66 73 56 82 Mob : (+98) 912 03 161 02

DRAWING No.		APPROVED BY MEI		UNLESS OTHERWISE SPECIFIED TOLERANCES ARE .X ±0.3 .XX ±0.20 .XXX ±0.100 ANG. ±1°				
		CHECKED BY BECKY						
		DRAWING BY HZF						
SCALE	NONE	REV.	A1		UNIT mm			

NO.	REV.	REVISIONS	CHK	DATE
1	A1	Modify Data	BECKY	06/07/2005
2	A0	NEW RELEASE	RAN	